



BLAZETM

OUTDOOR KITCHENS + GRILLS



Our Story

We set out to create a line of grills and outdoor kitchen products that wouldn't break down.

That was the beginning for Blaze. We studied and inspected what was currently on the market, identified the weaknesses and then started from scratch. What emerged was a collection of products that were easy to use and engineered to last, backed by a best-in-class, lifetime warranty*—because we mean it.

*Learn more about our industry-leading warranty at blazegrills.com/warranty





Effortless by Design

The Blaze product line isn't complicated
(like other brands).

We design products that allow everyone to
experience their high quality. But simple to use and
maintain doesn't mean unsophisticated.

Our style combines sleek and modern elements so
that each Blaze product is constructed to meet our
standards of excellence and efficiency.





Engineered for Life

To this day, we build outdoor living products better.

Well after other brands have been left on the curb, Blaze grills and outdoor kitchen equipment will continue to serve as centerpieces for our customers' spaces. That's what makes us Blaze. Visit blazegrills.com to find a local or online retailer.

Better designs.
Purposefully simple

Better materials.
Stronger and superior

Better functionality.
Best-in-class, lifetime warranties





Our Warranty

Proud to Stand Behind Every Product

Blaze gas grills are backed by a best-in-class, lifetime warranty that warrants against any defects in the manufacturing and workmanship on the cooking grids, stainless steel housing, stainless steel burners, flame tamers, heat zone separators, control valves, and all other stainless steel components.

Electrical and ignition components are covered for one year after the date of purchase. Grills must be registered within thirty days for the warranty to apply.



Our Collections

We're proud to offer products for every outdoor cooking need, from the weekend griller to the most dedicated outdoor chef.

The cornerstone of our entire catalog, these grills—and their corresponding burners or specialty cookers—embody Blaze: effortless by design, engineered for life.



LBM

An affordable, commercial-style gas grill that any outdoor cook can operate and easily enjoy, the LBM shares the foundation of our higher-end models but without the added performance features.



LTE

The LTE is our original workhorse, featuring all the components you could ever need: cast stainless steel burners, patented triangular grill grates, and interior lighting. It's our bestseller for a reason.



LTE+

With all the same features as the LTE, the LTE+ offers strategic engineering enhancements to make your cooking experience even better—such as a lift-assist hood and an updated lighting system.



LTE PRO

The LTE PRO is our newest and most modern model. Its cutting-edge design includes a digital temperature screen and additional upgrades to provide intense power to users without requiring any extra effort.



LUX

In a class of its own, the LUX is an intentionally simplified and streamlined model built with the thickest stainless steel components for exceptional performance and a luxury aesthetic, cook after cook.





Outdoor Cooking

The beating heart of your backyard—explore the grills, specialty cookers, and power burners to create with confidence.

GAS GRILLS

LUX Gas Grill	14
LTE PRO Gas Grill	15
LTE+ Gas Grill	16
LTE+ Marine Grade Gas Grill	17
LTE Gas Grill	18
LBM Gas Grill	19

GRIDDLES

LTE PRO Gas Griddle	20
LTE+ Gas Griddle	21
LTE Gas Griddle	22

CHARCOAL GRILLS

Kamado Grill	23
Charcoal Grill	24

OUTDOOR OVEN

Outdoor Oven	25
--------------------	----

SIDE BURNERS + POWER BURNERS

Side Burners	26
Power Burners	27

COOKING ACCESSORIES

Grill + Griddle	28
Kamado	30

The dimensions listed in the following pages are subject to change and should be used for informational purposes only. Please check your product owner's manual to verify cutout information.





3-BURNER/4-BURNER

LUX Gas Grill



From the streamlined style and exceptional strength of thick, heavy-duty 304-grade stainless steel construction to the ultra-efficient performance, every inch of the LUX is designed for an unmatched cooking experience.

All told, this grill is an eye-catching outdoor centerpiece that will impress guests with its luxury aesthetics, performance, and longevity.

Enjoy your Blaze grill freestanding on a cart or built into your outdoor kitchen island.

BLZ-4PRO-LP/NG

Dimensions: 44³/₁₆" W x 28³/₁₆" D x 24¹/₄" H
Cutout Dimensions: 42¹/₂" W x 23⁵/₁₆" D x 10¹/₂" H

BLZ-4PRO-CART-LTSC

Dimensions: 75¹/₁₆" W x 23³/₁₆" D x 35¹/₄" H

BLZ-3PRO-LP/NG

Dimensions: 34" W x 28³/₁₆" D x 24¹/₄" H
Cutout Dimensions: 32¹/₄" W x 23⁵/₁₆" D x 10¹/₂" H

BLZ-3PRO-CART-LTSC

Dimensions: 65¹/₂" W x 26³/₄" D x 34³/₄" H

- Heavy-duty 304-grade stainless steel construction is backed by a best-in-class, lifetime warranty.
- 18,000 BTUs per burner for efficient cooking power.
- Push-and-turn flamethrower ignition with backup flashtube and crossover channels for each burner ensures a reliable flame with every start.
- Double-lined, 304 stainless steel grill hood protects the outer layer from heat discoloration and retains steady, high heat.
- 10,000-BTU infrared burner with an included rotisserie kit for slow-roasted dishes.
- The 12 mm-thick, heavy-duty hexagonal cooking rods soak up heat to produce exceptional sear marks.
- Professional-quality cast stainless steel H-burners deliver unrivaled cooking power and durability.
- Removable heat zone separators divide the cooking surface into individual temperature zones, putting you in command of every square inch of space.
- Sophisticated lighting system includes internal halogen lights and signature red LED-illuminated control knobs.

4-BURNER/5-BURNER

LTE PRO Gas Grill



Introducing the most advanced LTE model yet: the LTE PRO. Inspired by our modern new brand look, this grill is designed to provide even more power to users without requiring extra effort. That includes 14,000-BTU main burners, plus a 10,000-BTU rear burner for impressive zonal power.

The LTE PRO is built from heavy-duty 304-grade stainless steel and features stainless steel flame tamers to ensure the most even heat distribution across the grill surface. Like all Blaze grills, the LTE PRO is backed by a best-in-class, lifetime warranty, so you can buy confidently and take your cooking to the next level.

BLZ-4LTEPRO-LP/NG

Dimensions: 32¹/₂" W x 27" D x 22¹/₂" H
Cutout Dimensions: 30³/₄" W x 21¹/₄" D x 9¹/₂" H

BLZ-4LTEPRO-CART-LTSC

Dimensions: 63⁴/₁₆" W x 24¹/₂" D x 35⁵/₁₆" H

BLZ-5LTEPRO-LP/NG

Dimensions: 40¹/₂" W x 27" D x 22¹/₂" H
Cutout Dimensions: 38" W x 21¹/₄" D x 9¹/₂" H

BLZ-5LTEPRO-CART-LTSC

Dimensions: 71³/₁₆" W x 24¹/₂" D x 35¹/₄" H

FEATURES:



Digital Temperature Screen

Enhanced control panel reads temperature from grill surface + 2 meat probes.



Larger Capacity Fire Box

Increased hood clearance allows more food in the fire box or added rotisserie space.



Ergonomic Handle

Spring-assisted grill hood with rolling "H" handle for the smoothest operation.



Innovative Warming Rack

Multipurpose, heavy-duty warming rack can now be stored in an upright position.



Upgraded Control System

Non-slip, knurled knobs feature LED lights with temperature indicators for safety.



Improved Grill Grates

Thicker 12 mm hexagonal grill grates retain more heat for intense searing.





FEATURES:



New Lighting System
Magnet latch triggers automatic interior halogen lighting while in use.



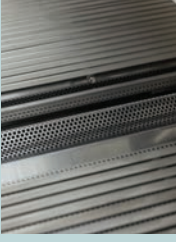
Easy-Lift Hood
Innovative hood-assist mechanism makes opening and closing effortless.



Upgraded Control Panel
Laser-cut knobs feature LED red backlighting for safety and a decorative accent.



Perforated Flame Tamers
Full-coverage flame-stabilizing grids minimize flare-ups and protect burners.



Heat Zone Separators
Removable separators divide the cooking surface into individual temperature zones.

4-BURNER/5-BURNER

LTE+ Gas Grill



Following up on the bestselling LTE was no small task, but our engineers didn't disappoint when designing the LTE+.

Built from heavy-duty 304-grade stainless steel, this grill includes a double-lined hood to protect the outer layer from heat discoloration and retain steady, high heat. Cast stainless steel linear burners deliver impressive cooking power, and at 14,000 BTUs apiece, they do so efficiently. Not to mention the 10,000-BTU infrared rear burner, which lets you put on a show with succulently slow-roasted dishes.

With the same impressive features as the LTE, along with new strategic engineering enhancements, the LTE+ provides the premium cooking experience every outdoor cook deserves.

BLZ-4LTE3-LP/NG
Dimensions: 32½" W x 25¾" D x 21¼" H
Cutout Dimensions: 30⅝" W x 21¼" D x 8½" H

BLZ-4-CART-SC
Dimensions: 56¼" W x 22⅞" D x 35½" H

BLZ-5LTE3-LP/NG
Dimensions: 39½" W x 25¾" D x 21¼" H
Cutout Dimensions: 38⅝" W x 21¼" D x 8½" H

BLZ-5-CART-SC
Dimensions: 63⅝" W x 22⅞" D x 35½" H

4-BURNER

LTE+ Marine Grade Gas Grill



For those in costal climates, Blaze offers LTE+ models built from marine grade 316L stainless steel, an alloy with extra resistance to saltwater environments. It's the only marine grade grill in its class.

This 4-burner grill is also rated for multi-user applications such as multi-family dwellings, apartments, hotels, and, of course, seaside condos. Under this 1-year multi-family warranty, Blaze also extends its usual lifetime coverage to include labor charges.

Also available in the LTE Gas Grill.

BLZ-4LTE3MG-LP/NG
Dimensions: 32½" W x 25¾" D x 21¼" H
Cutout Dimensions: 30⅝" W x 21¼" D x 8½" H

BLZ-4LTE2MG-LP/NG
Dimensions: 32½" W x 25¾" D x 21¼" H
Cutout Dimensions: 30⅝" W x 21¼" D x 8½" H

BLZ-4-CART-SC
Dimensions: 56¼" W x 22⅞" D x 35½" H

- New automatic safety glow interior halogen lighting keeps lights on during use for better visibility.
- An innovative hood-assist mechanism makes opening and closing the grill effortless.
- Laser-cut control knobs feature LED red backlighting for safety and a signature decorative accent.
- Patented* 9 mm triangular cooking rods maximize your searing capabilities.
- 14,000 BTUs per burner for the most efficient cooking power + 10,000-BTU infrared rear.
- Designed to minimize flare-ups, the perforated full-coverage flame-stabilizing grids also serve as excellent protection for the burners below.
- Cast stainless steel linear burners lit by a push-and-turn flamethrower primary ignition system.
- Removable heat zone separators divide the cooking surface into individual temperature zones, putting you in command of every square inch of space.
- Heavy-duty 304-grade stainless steel construction with double-lined grill hood protects outer layer from heat discoloration and retains steady, high heat.





4-BURNER/5-BURNER

LTE Gas Grill



Even with a signature LED-illuminated control system to complement the LTE’s sleek, durable 304-grade stainless steel design, we prioritized an accessible price point.

Practical features, like an infrared rear burner and removable heat-zone separators, combined with top-of-the-line performance, make grilling for friends and family more enjoyable and easier than ever.

Available as a freestanding grill on a cart or built into your outdoor kitchen island. Marine Grade LTE option included.

BLZ-4LTE2-LP/NG
Dimensions: 32½" W x 25¾" D x 21¼" H
Cutout Dimensions: 30⅝" W x 21¼" D x 8½" H

BLZ-4-CART-SC
Dimensions: 56¼" W x 22⅞" D x 35½" H

BLZ-5LTE2-LP/NG
Dimensions: 39½" W x 25¾" D x 21¼" H
Cutout Dimensions: 38⅝" W x 21¼" D x 8½" H

BLZ-5-CART-SC
Dimensions: 63⅝" W x 22⅞" D x 35½" H

*blazegrills.com/patent

- Patented* 9 mm triangular cooking rods maximize your searing capabilities.
- 14,000 BTUs per burner for the most efficient cooking power.
- 10,000-BTU infrared rear burner that lets you put on a show with succulently slow-roasted dishes.
- Designed to minimize flare-ups, the perforated full-coverage flame-stabilizing grids also serve as excellent protection for the burners below.
- Illuminated control knobs have red LED lights for sophisticated accent.
- Professional-quality cast stainless steel linear burners deliver impressive cooking power.
- Push-and-turn flamethrower primary ignition system delivers a fast start every time.
- Removable heat zone separators divide the cooking surface into individual temperature zones, putting you in command of every square inch of space.
- Double-lined, 304 stainless steel grill hood protects outer layer from heat discoloration and retains steady, high heat.
- Heavy-duty 304-grade stainless steel construction is backed by a best-in-class, lifetime warranty and Blaze’s top-notch customer support.



3-BURNER/4-BURNER

LBM Gas Grill



As the Luxury Builder Model, this Blaze collection provides affordable, commercial-style gas grills that any outdoor cook can easily enjoy.

No matter the installation site—whether it’s a multifamily dwelling, apartment complex, or common backyard—these grills are built to last and turn everyone into a grill master.

The LBM is available in 3-burner and 4-burner configurations with an optional cart for freestanding use.

BLZ-3LBM-LP/NG
Dimensions: 25" W x 25¾" D x 21¼" H
Cutout Dimensions: 23¼" W x 21¼" D x 8½" H

BLZ-3-CART-SC
Dimensions: 49" W x 22⅞" D x 35½" H

BLZ-4LBM-LP/NG
Dimensions: 32½" W x 25¾" D x 21¼" H
Cutout Dimensions: 30⅝" W x 21¼" D x 8½" H

BLZ-4-CART-SC
Dimensions: 56¼" W x 22⅞" D x 35½" H

- Commercial-quality, 304-grade stainless steel tube burners feature 14,000 BTUs of cooking power each.
- Double-lined, 304 stainless steel grill hood protects outer layer from heat discoloration and retains steady, high heat.
- Full-width, roll-out drip tray and removable lower heat baffles for easy cleanup.
- Removable heat zone separators divide the cooking surface into individual temperature zones, putting you in command of every square inch of space.
- Designed to minimize flare-ups, the perforated flame-stabilizing grids also serve as excellent protection for the burners below.
- Durable, heavy-duty 8 mm round stainless steel cooking rods provide exceptional sear marks.
- Push-and-turn flamethrower primary ignition system delivers a fast start every time.



FEATURES:



Heavy-Duty Surface
Reinforced stainless steel cooking surface retains more heat.



Digital Temperature Screen
Enhanced control panel reads temperature from 3 zones + 3 meat probes.



Adjustable Surface
Integrated leveling screws can adjust the surface according to foods being cooked.



Full-Size Drip Trough
Drop-in-place drip trough simplifies grease management and improves safety.



Ergonomic Handle
“H” handle with rotating center ensures ease of use when lifting the lid.



Sound Dampers
Cushioned sound dampers prevent the attached lid from ever slamming shut.

40-INCH

LTE PRO Gas Griddle



Built with a reinforced cooking surface and attached lid, the LTE PRO Griddle is the heaviest in its class, promising exceptional durability and longevity. Its modern design ensures even heat across the 40-inch surface for the most consistent results.

The three separate cooking zones provide complete cooking versatility, with the three burners efficiently producing 15,000 BTUs each, for a total of 45,000 BTUs. Add in innovations like non-slip, knurled knobs featuring LED lights with temperature indicators for safety and you’ve got a restaurant-caliber griddle that delivers professional-grade performance in your yard.

BLZ-GRIDDLE40-LP/NG
Dimensions: 40” W x 29” D x 16⅓” H
Cutout Dimensions: 37½”W x 24¼” D x 11¾” H

BLZ-GRIDDLE40-CART-LTSC
Dimensions: 72” W x 27⅝” D x 35¾” H

30-INCH

LTE+ Gas Griddle



An upgraded griddle for backyard chefs of all levels, the 30-Inch LTE+ includes new and improved features such as an updated control panel and sound dampers, as well as a reinforced cooking surface. In other words, it’s a premium cooking experience.

The 304 stainless steel construction now includes a double-walled, attached lid. Two 15,000-BTU burners offer efficient cooking power, and with the strategic enhancements found across the entire Blaze LTE+ lineup—such as larger peepholes that allow for safe and clear monitoring of the burners—this griddle is ready for your outdoor kitchen.

BLZ-GRIDDLE-LTE3-LP/NG
Dimensions: 30⅞” W x 28¼” D x 16⅓” H
Cutout Dimensions: 28¼”W x 24¼” D x 11¾” H

BLZ-GRIDDLELTE3-CART-SC
Dimensions: 54⅞” W x 25” D x 36¼” H

FEATURES:



Updated Control System
New panel with knobs that shine red when gas is flowing for added safety.



Full-Size Drip Trough
Drop-in-place drip trough simplifies grease management for effortless cleanup.



Adjustable Surface
Integrated leveling screws can adjust the surface according to foods being cooked.



Improved Flattop
Cooking surface ensures performance at even the highest temperatures.



Sound Dampers
Cushioned sound dampers prevent the lid from ever slamming closed.



Attached Lid
Newly added lid protects griddle surface from outdoor elements.



30-INCH

LTE Gas Griddle



By designing the original 30-Inch LTE Griddle, Blaze entered a new outdoor cooking category while maintaining the same results you'd expect from the leading grill brand.

Like our gas models, we chose heavy-duty, 304-grade stainless steel for maximum durability, along with the LTE series' LED red control knob illumination.

The stainless steel burners are U-shaped, providing exceptionally even heat across the 495 square inches of cooking surface, which can be used for everything from stir fry and searing steaks to a full-scale breakfast.

BLZ-GRIDDLE-LTE-LP/NG
Dimensions: 30" W x 28³/₈" D x 12³/₈" H
Cutout Dimensions: 28¹/₈" W x 24³/₈" D x 12" H

BLZ-GRIDDLE-CART-SC
Dimensions: 56¹/₄" W x 22¹/₈" D x 35¹/₂" H

- Heavy-duty commercial-grade stainless steel construction offers unrivaled longevity.
- 18,000 BTUs of cooking power in each U-shaped burner provide even heat across the griddle surface.
- Reliable flamethrower ignition makes lighting the griddle simple, while the backup flash-tube ignition with crossover channels ensures you can always ignite the griddle.
- Full-width grease trough directs drippings into the drip tray for effortless cleanup.
- Enjoy your Blaze griddle freestanding on a cart or built into your outdoor kitchen island.

20-INCH CAST ALUMINUM

Kamado Grill



Blaze took lessons learned from centuries of kamado-style cooking and introduced a modern twist by building this patented kamado* with 1-inch-thick solid cast aluminum.

This cast aluminum design provides unparalleled durability—whether it's exposed to extreme saltwater or any other conditions that would wreak havoc on a ceramic kamado—plus the same outstanding temperature control and heat retention traditional kamados are so well known for.

With a lifetime warranty on the cast aluminum body and other key components, kamado purists can confidently break from tradition to experience a superior grill engineered for luxury cooking.

BLZ-20-KAMADO
Dimensions: 21⁷/₈" W x 27⁷/₈" D x 33⁷/₈" H

BLZ-20-KMDO-CART-SC
Dimensions: 48¹/₄" W x 28¹/₄" D x 38¹/₂" H

FEATURES:



Molded Exhaust Cap
Cast-molded exhaust cap allows for precise heat control.



1-Inch-Thick Cast Aluminum
This design adds unparalleled durability.



Lift Assist
Pre-installed lid hinge with lift assist allows for easy opening and burping of the kamado.



Cooking Grid
20-inch diameter stainless steel hex-shaped cooking surface provides exceptional heat retention and beautiful sear marks.



Hinged Cooking Surface
Hinged cooking surface allows for the convenient addition of wood or charcoal without removing the grates.



Tongue-and-Groove Seal
Instead of the traditional gasket design, which often needs replacement because of wear and tear, the tongue-and-groove seal helps the lid last longer and better lock in smoke.

CHARCOAL GRILLS



32-INCH

Charcoal Grill



We purposefully engineered the Charcoal Grill with the same thought that goes into all our products, starting with heavy-duty 304-grade stainless steel construction for rugged durability in the outdoors.

We followed that up with our best-in-class, lifetime warranty as well as a double-lined grill hood that wards off heat discoloration and efficiently traps heat. And once you get under that hood, you will find even more to love about our affordable, commercial-style charcoal grill.

BLZ-4-CHAR

Dimensions: 32½" W x 25¾" D x 21¼" H
Cutout Dimensions: 30⅝" W x 21¼" D x 8½" H

BLZ-4-CART-SC

Dimensions: 56¼" W x 22⅞" D x 35½" H

- Hook-and-hang cooking grids make it possible to add charcoal and wood while cooking.
- Adjustable tray can be lowered closer to the coals for high-heat grilling or raised for slow cooking.
- Rear vent can be adjusted for precise airflow control, which, in turn, affects temperature.
- Removable charcoal tray and full-width, pull-out ash pan lead to hassle-free cleaning.
- Enjoy your Blaze grill freestanding on a cart or built into your outdoor kitchen island.

26-INCH

Outdoor Oven



Simple to use and ingeniously designed, the Outdoor Oven can produce all varieties of restaurant-quality pizza. And with a rotisserie basket and cooking racks, you'll just as easily prepare a sumptuous rack of lamb as a delicious personal pie.

After all, this outdoor unit is designed to be a functional oven, which means you can cook just about anything in it and do so in the beauty of the backyard.

Available in freestanding, countertop, and built-in configurations.

BLZ-26-PZOVN-LP/NG

Dimensions: 26½" W x 29" D x 23¼" H
Cutout Dimensions: 24⅞" W x 24⅞" D x 8" H

BLZ-26-PZOVN-TBL

Dimensions: 27¾" W x 29" D x 35⅞" H

BLZ-26-PZOVN-CART2

Dimensions: 32¾" H x 27⅞" W x 25⅞" D

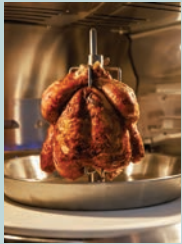
BLZ-26-PZOVN-CART

Dimensions: 35½" H x 27⅞" W x 25⅞" D

FEATURES:



Rotating Ceramic Stone
17-inch rotating ceramic pizza stone provides an even bake and prevents the need to hand-turn pizza.



Rotisserie Kit + 2 Cooking Racks
Vertical rotisserie rod with drip tray and dual cooking racks allow for many food options in addition to pizza.



Digital Temperature Screen
Digital screen with connected meat probes offers the most accurate cooking temperatures.



Double-Walled Glass Door
Interior lighting and double-pane glass oven door removes the need to regularly open oven to check food, preventing heat loss.



High Temperature Range
Reaches temperatures as high as 550°F while using the dual cooking racks with the stone surface capable of hitting over 700°F.



BURNERS

Side Burners + Power Burners

To complement your Blaze grill and complete your outdoor kitchen, we offer a selection of side burners and power burners.

Whatever your demands, Blaze burners deliver a reliable flame with every start, thanks to the push-and-turn ignition system also found on our grills.

Each burner in the set features a stainless steel cover to block the outdoor elements, while the LTE, LTE+, and LUX models sport signature red LED lighting along with full-width drip trays for speedy cleanup.

Our side burners and power burners are all built with 304-grade stainless steel and covered by the best-in-class, lifetime warranty upon which the Blaze brand was built.



LTE+ Built-In Double Side Burner

- Two heavy duty 12,000-BTU brass-plated burners churn out powerful but controlled heat.
- LED-illuminated control system with safety glow lighting match LTE+ grills.
- Stainless steel construction is durable in any outdoor environment.
- Removable stainless steel cover shields burner from outdoor elements when not in use.

BLZ-SB2-LTE3-LP/NG

Dimensions: 12¹/₁₆" W x 22¹/₁₆" D x 9³/₄" H
Cutout Dimensions: 10³/₄" W x 20³/₄" D x 8¹/₂" H



LTE Built-In Double Side Burner

- Two heavy-duty, 12,000-BTU brass burners churn out powerful but controlled heat.

BLZ-SB2LTE-LP/NG

Dimensions: 15³/₄" W x 22⁵/₈" D x 9³/₁₆" H
Cutout Dimensions: 14" W x 19¹/₂" D x 8" H



Drop-In Single Burner

- A heavy-duty, 12,000-BTU brass burner provides superior heat output.

BLZ-SB1-LP/NG

Dimensions: 12¹/₂" W x 19¹/₂" D x 4¹/₂" H
Cutout Dimensions: 11¹/₄" W x 18" D x 2¹³/₁₆" H



LUX Built-In High-Performance Power Burner

- A staggering total of 60,000 BTUs between the 25,000-BTU inner ring and the 35,000-BTU outer ring.
- Efficient design and narrow width save cooking time and counter space.
- Burner rings are circled by a stainless steel guard that blocks wind interference and channels maximum heat efficiency.

BLZ-PROPB-LP/NG

Dimensions: 15³/₄" W x 23⁵/₈" D x 10¹/₄" H
Cutout Dimensions: 14" W x 19¹/₂" D x 9¹/₄" H



LTE+ Built-In High-Performance Power Burner

- 25,000-BTU inner ring and 35,000-BTU outer ring combine for an impressive 60,000 BTUs of efficient heating power.
- Stainless steel guard surrounds the burner rings, protecting them from wind and concentrating heat for maximum effectiveness.
- Powerful design brings water to a boil in half the time compared to other burners on the market.
- Narrow width allows more room in your outdoor kitchen for another component or just additional counter space.
- LED-illuminated control system with safety-glow lighting matches LTE+ grills.

BLZ-PBLTE3-LP/NG

Dimensions: 15³/₄" W x 23" D x 9³/₁₆" H
Cutout Dimensions: 14" W x 19¹/₂" D x 8" H



LTE Built-In High-Performance Power Burner

- 25,000-BTU inner ring and 35,000-BTU outer ring combine for an impressive 60,000 BTUs of efficient heating power.
- Stainless steel guard surrounds the burner rings, protecting them from wind and concentrating heat for maximum efficiency.

BLZ-PBLTE-LP/NG

Dimensions: 15³/₄" W x 22⁵/₈" D x 9³/₁₆" H
Cutout Dimensions: 14" W x 19¹/₂" D x 8" H





GRILL + GRIDDLE

Accessories

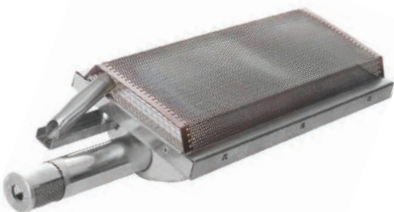
Getting the most out of your Blaze grill can be as simple as having the right accessories on hand. Blaze has every upgrade to fully enjoy the elegance, purpose, and strength of our premium outdoor kitchens and grills.



Pizza Stone

TRADITIONAL GRILL
BLZ-PZST

LUX GRILL
BLZ-PRO-PZST-2



Infrared Searing Burner

BLZ-IRN



Stainless Steel Griddle Plate

14-INCH
BLZ-14-SSGP

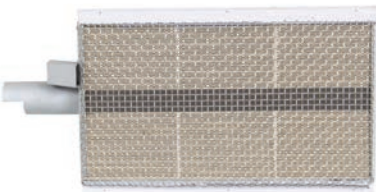
24-INCH
BLZ-24-SSGP-2



Rotisserie Kit

32-INCH GRILL
BLZ-34-ROTIS-SS

40-INCH GRILL
BLZ-5-ROTIS-SS



Professional Infrared Searing Burner

BLZ-PRO-IR



1/2-Inch Natural Gas Hose with Quick Disconnect

BLZ-NG-HOSE

Smoker Box



LTE + LBM GRILLS
BLZ-SMBX

EXTRA-LARGE SMOKER BOX
BLZ-XL-SMBX

LUX GRILL
BLZ-PRO-SMBX

LUX EXTRA-LARGE SMOKER BOX
BLZ-XL-PROSMBX

PORTABLE GRILL
BLZ-PROPRT-SMBX

LED Light Kit



BLZ-4B-LED-AMBER, BLUE, WHITE
BLZ-5LTELED-AMBER, BLUE, WHITE
BLZ-2LED-AMBER, BLUE, WHITE
BLZ-3PROLED-AMBER, BLUE, WHITE

Built-In Grill and Cart Covers



BUILT-IN
3BICV
4BICV
5BICV
3PROBICV
4PROBICV
4LTEPROBICV
5LTEPROBICV
20KMBICV
GRDBICV
GRDLTE3BICV
GRD40BICV
SB2BICV
PBBICV
1PROPRT-CVR
26PZOVN-BICV
26PZOVN-TBCV
SSISLCVR

CART
3CTCV
4CTCV
5CTCV
3PROCTCV
4PROCTCV
4LTEPROCTCV
5LTEPROCTCV
GRDCTCV
GRDLTE3CTCV
GRD40CTCV
26PZOVN-CTCV
KMDOCTCVR





KAMADO

Accessories



Kamado Cart

- Stainless steel construction is durable in outdoor conditions.
- Adds practical storage for your tools and accessories.
- Side shelves provide a convenient work area while grilling.
- Heavy-duty casters allow you to reposition the grill as needed.

BLZ-20-KMDO-CART-SC
 Dimensions: 48¼" W x 28¼" D x 38½" H



Easy-Light Indirect Cooking System With Moisture-Enhancing Pan

- Heavy-duty 304-grade stainless steel construction for lasting durability.
- Charcoal basket lets you section off fuel for indirect heat, or for direct infrared cooking in tandem with the Kamado Rotisserie Kit.
- The lower basket chamber doubles as a chimney starter for use with charcoal lighters and other ignition methods.
- Stainless steel drip pan catches essential drippings for pan gravies and bastes, plus it can act as a water pan for added moisture when smoking.

BLZ-KMDO-CBDRP



4-in-1 Stainless Steel Cooking Plate

- Solid, 304-grade stainless steel brings the longevity you need for years of enjoyable outdoor cooking.
- Provides a layer of heat deflection for low-and-slow cooking.
- Serves as a pizza stone to give you the perfect crust every time.
- Functions as a cooking plate that helps add a hint of smoke to your favorite sauces, stews, soups, and gumbos.
- Can be used as a griddle plate for breakfast and full-crust searing.

BLZ-KMDO-15SSP



Rotisserie Kit With Waterproof Motor

- Waterproof rotisserie motor is designed to thrive in the outdoor elements.
- Compatible with Easy-Light Indirect Cooking System and Moisture-Enhancing Pan.
- Adds versatility to your outdoor cooking setup by allowing you to slow-roast food over the coals.

BLZ-KMDO-2-ROTIS



Stainless Steel Kamado Handles

- Sturdy construction for a long lifespan in the outdoors.
- Offer a solid grip when moving your kamado.
- Feature insulated spacers that keep the handles from getting overly hot when the grill is in use.

BLZ-KMDO-SSHAND



Kamado Covers

- Greatly extends the lifespan of your grill, making it a better investment over time.
- Vinyl cover is water-resistant to shield the grill from elements like dirt, dust, and rain.
- Designed with a soft felt backing that will not scratch the exterior of the grill when covered.

**20KMBICV
 20KMCTCV
 KMDOCTCVR**





Blaze has a new look to reflect our commitment to innovation and crafting the most efficient outdoor living products. It may be a different aesthetic, but we're the same Blaze.

Copyright © January 2025 Blaze®. All Rights Reserved